



## PROFESSIONAL 6-CIRCUIT CONNECTORS

- Fully compatible with Veam "VSC" and Socapex "419" connectors
- Extra-rugged, machined aluminum insert and backshells
- Multiple cable-specific compression strain reliefs available
- Hard gold-anodized contacts available in solder & crimp versions with extended ground contacts standard
- Durable, scratch-resistant black anodized finish.

### PLUS!

- New mechanical anti-rotation lock system secures insert to prevent spinning.
- New grub screw prevents "spinners" (line connectors)
- Reduced flange thickness reduces profile by 2 mm (chassis connector). Better match with female connectors.

### Worldwide Exclusive Distribution

Veam "VSC" and Socapex "419" are registered trademarks.

Los Angeles  
+1 818.899.8818

London  
+44 (0)20.8574.9700

New York  
+1 201.896.8600

**tmb**  
www.tmb.com

Toronto  
+1 519.538.0888

Beijing  
+86 10.8492.1587

Riga  
+37 16.868.8955

### Connector Specifications

Number of contacts	19
Ingress protection	IP67 when mated
Slat atmosphere resistance	96 h IEC 68-21-11
Operating temperature	-55 to +125 °C
Shell material	Machined aluminum alloy
Finish	Black anodized
Insert material	Thermoplastic rubber

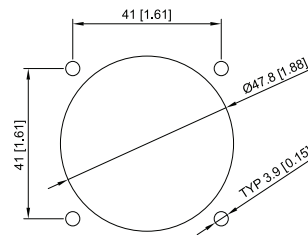
### Strain Relief Bushing Compatibility

Part number	Application	Compatible Cable
PSP19CG15/23	15-23 mm Multicable	ProCable 18x1.5mm <sup>2</sup>
		ProCable PC1618
		ProCable 18x2.5mm <sup>2</sup>
		ProCable PC1414
PSP19CG22/32	22-32 mm Multicable	ProCable PC1419
		ProCable PC1214
		ProCable PC1214SEO
		ProCable PC1219
		ProCable PC1014
PSP19CGBO	Break-out	12/3 SJO X 6
		14/3 SJO X 6
		H073x2.5 X 6
		H073x1.5 X 6

### Contact Specifications

Type	Gold plated removable contacts for crimping or soldering
Voltage rating	700 VAC
Max current	500 VDC
Rated current	41 A
Potential drop	23 A
Dielectric strength test voltage	63 mV
Dielectric strength min. flashover	2000 VAC RMS
	2800 VAC RMS

### Cutout Dimensions



### Dimensions in millimeters

