

PC-Based Portable Cable Tester POWER, DATA, LIGHTING, AUDIO, VIDEO!

The ProPlex CyberScan Cable Tester is a comprehensive cable tester, custom-built to the customer's specifications in a rugged rolling ATA flight case. CyberScan's built-in CableEye™ software identifies and finds open circuits, shorts, miswires, and intermittent connections. It also checks for basic continuity, contact and isolation resistance using two user defined resistance thresholds, and can measure embedded resistors and diodes.

Test power, data, and audio cables in less than a second! One-button or footswitch operation with Ready, Match, and Error indicators, makes the CyberScan Tester quick and easy to use, saving time and money.

A seamless, integrated "Hipot" Dielectric Withstand Test option is also available.

- One custom CyberScan will cover all your specified power, data, lighting, audio, video cable testing needs
- PC-based, capable of generating reports, printing labels, and can be linked with inventory management software
- The PC software interface can be customized to customer needs
- Connector panels are custom-built to customer's specification
- Three system levels available: Continuity only, continuity and insulation, and conversion to HiPot which covers continuity, dielectric integrity, and load
- Provision to scan cable barcodes for quick testing, and data logging linked through inventory management software
- Single-button or footswitch operation with a test time of less than a second



Worldwide Exclusive Distribution

sales@tmb.com

Los Angeles
+1 818.899.8818

London
+44 (0)20.8574.9700

tmb
www.tmb.com

New York
+1 201.896.8600

Beijing
+86 10.8492.1587

Toronto
+1 519.538.0888

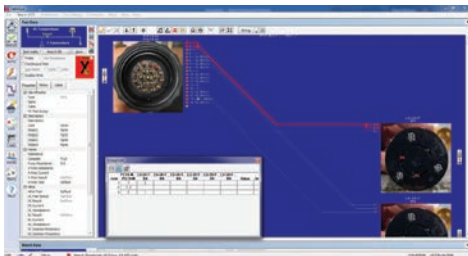
CableEye Software

Identify intermittent, miswired, or defective cables INSTANTLY!

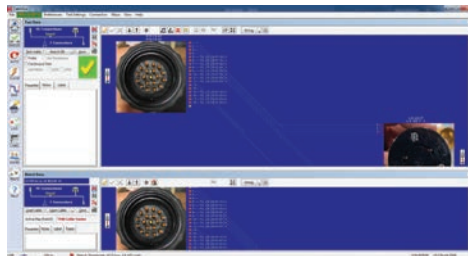
Every CyberScan is supplied with testing software and ready-to-go user interface configured for and to your specifications. This includes custom interfacing, custom connector graphics, import/export, and guided assembly. This is a Windows-based program compatible with desktops, laptops, tablets. A built-in touchscreen option is also available. The interface is color coded and graphic rich to simplify identification of the location and types of any errors as well.

With Wi-Fi and network capabilities, the software is easily installed and upgraded on PCs and laptops.

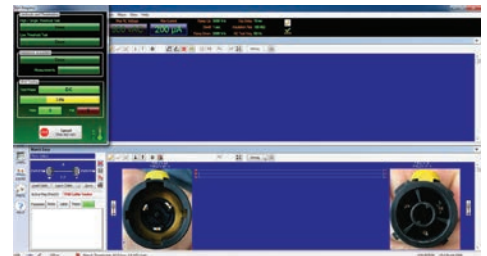
- CableEye software supports up to 152 Test Points (76-conductor cable maximum)
- Expandable to 2560 Test Points with M3 Expansion Module
- Automatically senses cable type, including break-outs/twofers etc., when cable is connected
- Cable measurements executed in less than a second
- Adjustable resistance thresholds for contact resistance down to 0.3 ohms, and for isolation up to 10 Megaohms
- Measurement of embedded resistors from 100 ohms to 1 Megaohms with 1% accuracy (lesser accuracy from 0.3 ohms to 10 Megaohms)
- Measurement of diodes and resistor/diode combinations



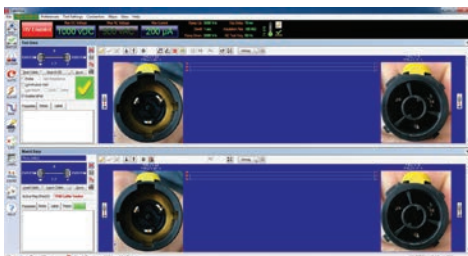
PS19 - break-out short on pins 1 & 2



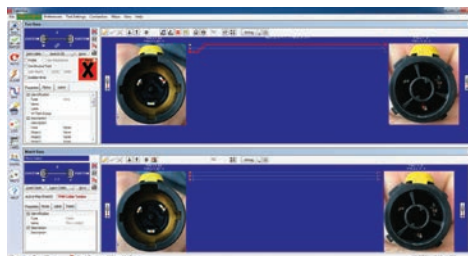
PS19 - Perfect test of break-out



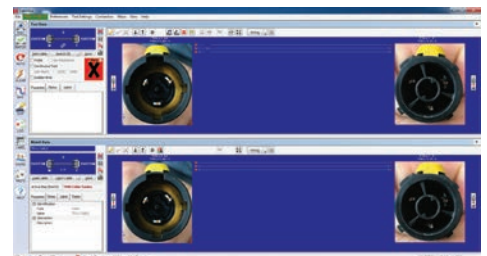
True1 - Hi-pot testing 1000VDC



True1 - Testing complete with passing



True1 - pin 1 has no continuity and pin 3 miswired



True1 - miswired-pins 1 & 3 flipped

Standard Panels

Custom panels also available. Configure a test rack to your specifications.



Edison IN/OUT, L6-30 IN/OUT (Shown)
Edison IN/OUT, L6-20 IN/OUT
Edison IN/OUT, L5-20 IN/OUT



L14-20 IN/OUT, L14-30 IN/OUT (Shown)
L16-20 IN/OUT, L16-30 IN/OUT



L5-15 IN/OUT, L6-15 IN/OUT (Shown)
L5-20 IN/OUT, L6-20 IN/OUT



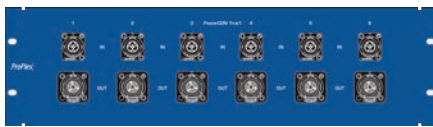
Edison Female 6-Circuit OUT (Shown)
Edison Male 6-Circuit IN



L5-20 Female 6-Circuit OUT (Shown)
L5-20 Male 6-Circuit IN
L6-20 Female 6-Circuit OUT
L6-20 Male 6-Circuit IN



L21-30 IN/OUT (Shown)
L21-20 IN/OUT



PowerCon True1 6-Circuit IN/OUT



PowerCon 20A 6-Circuit IN/OUT



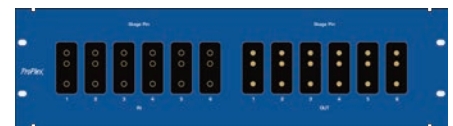
PowerCon 32A 6-Circuit IN/OUT



19-Pin IN/OUT, 7-Pin IN/OUT



19-Pin IN/OUT



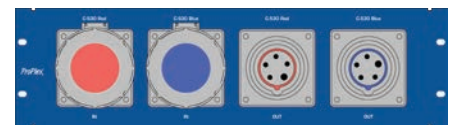
Stage Pin 6-Circuit IN/OUT



3-Pin XLR, 4-Pin XLR, 5-Pin XLR, EtherCon,
PowerCon IN/OUT



CPC 14-Pin IN/OUT, CPC 24-Pin IN/OUT



C-530 Red IN/OUT, C-530 Blue IN/OUT



SpeakON NL4 IN/OUT, SpeakON NL8 IN/
OUT



W1 IN/OUT, W2 IN/OUT



Veam 25-Pin IN/OUT, Veam 37-Pin IN/OUT



3-Pin XLR IN/OUT, EtherCon IN/OUT
BNC IN/OUT, HDMI IN/OUT, DVI IN/OUT