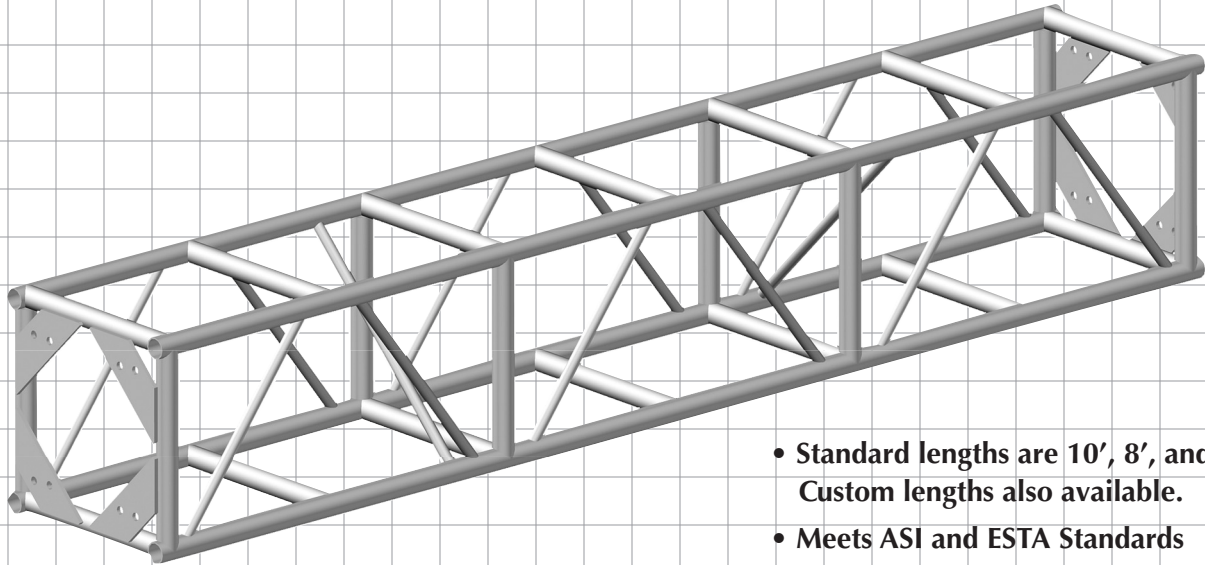
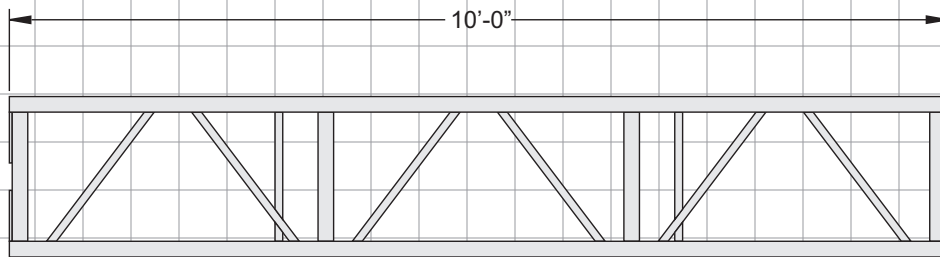




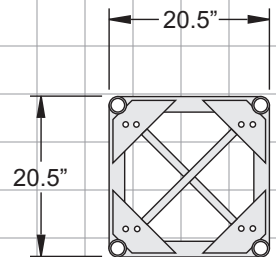
# Medium-Duty Truss 20.5" x 20.5" Plated



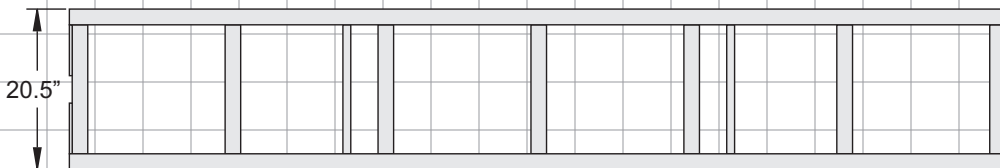
- Standard lengths are 10', 8', and 5'. Custom lengths also available.
- Meets ASI and ESTA Standards
- Bolts included.
- Main chords are 2" OD x 1/8" 6351T6 and 6082T6 aluminum.
- Diagonals are 1" OD. x 1/8" 6351T6 and 6082T6 aluminum.



FRONT VIEW



END VIEW



TOP VIEW



## LOS ANGELES

10643 Glenoaks Blvd.  
Pacoima, CA 91331  
USA

Tel: +1 818.899.8818  
Fax: +1 818.899.8813

## LONDON

21 Armstrong Way  
Southall  
UB2 4SD England

Tel: +44 (0)20.8574.9700  
Fax: +44 (0)20.8574.9701

## NEW YORK

100 Asia Place  
Carlstadt, NJ 07072  
USA

Tel: +1 201.896.8600  
Fax: +1 201.896.8601

## BEIJING

No. 309, Building 6  
Sanlitun Nanlu  
Chaoyang District  
Beijing, China 100027

Tel: +86 10.8492.1587  
Fax: +86 10.8492.7635

## TORONTO

409 Saddler St. West  
Box 654, Durham  
Ontario N0G-1R0

Tel: +1 519.369.9990  
Fax: +1 519.369.9992



# Medium-Duty Truss 20.5" x 20.5" Plated

## ProSpan MD 20.5" x 20.5" - ALLOWABLE LOADING

SPAN LENGTH		UNIFORMLY DISTRIBUTED LOAD				MAXIMUM ALLOWABLE POINT LOADS					
ft	m	lbs	kgs	lbs/ft	kg/m	lbs	kgs	lbs	kgs	lbs	kgs
10	3.05	8564	3893	856	1277	4282	1946	3212	1460	2141	973
20	6.10	4282	1946	214	319	2141	973	1606	730	1071	487
30	9.15	2855	1298	95	142	1427	649	1071	487	714	324
40	12.20	2141	973	54	80	1071	487	803	365	535	243
50	15.24	1713	779	34	51	856	389	642	292	428	195

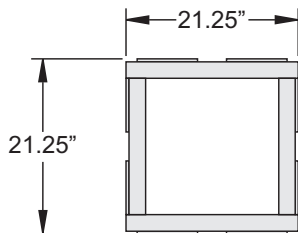
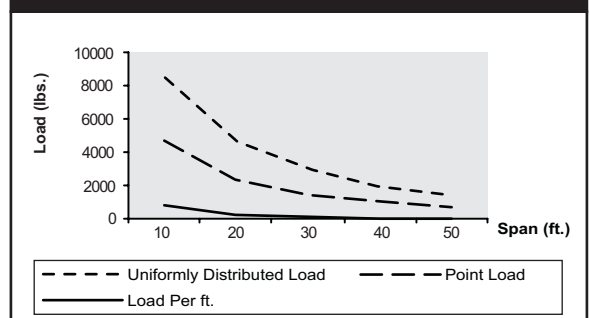
Tested to ESTA standards. Tested with 10'-0" sections. Other section lengths are available.

### Standard Unit Weights

Item	Weight	
	lbs	kgs
5' Section - MD 20.5" x 20.5"	56	25
8' Section - MD 20.5" x 20.5"	77	35
10' Section - MD 20.5" x 20.5"	85	39
4-Way Corner Block - MD 20.5" x 20.5"	39	18

Other truss lengths and cornerblock configurations available.

### ProSpan MD 20.5" x 20.5" - LOADING



4-Way Corner Block